



Elegant

Stunning shelters that not only protect the vehicles but also help power them



Sustainable

Clean & efficient energy maximised by generation at the charge point



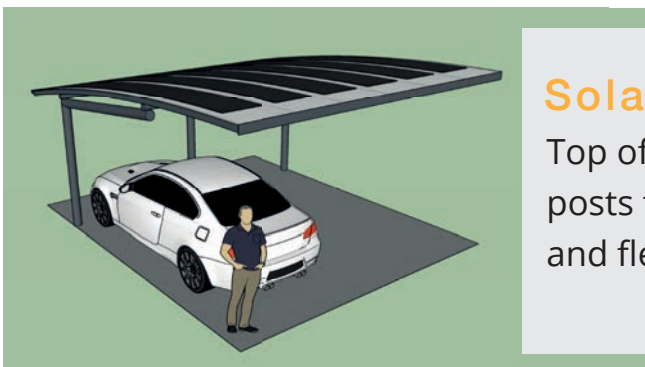
Power

Each parking bay can generate enough energy to power a typical car 5 – 10 K miles p/a



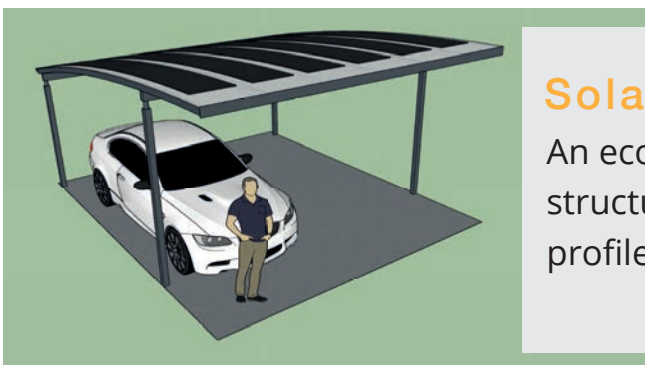
The Solar Brella

The twin bay canopy is an efficient structure that combines elegance with practicality. It can be oriented with the posts on the side of the car or in front of it to suit access. Infinitely extendable.



Solar Cantilever Curved

Top of the range curved roof canopy without any posts to the access side allowing for ease of access and flexibility of parking.



Solar Inset Posts Curved

An economic layout with inset posts to optimise structure and access while retaining an attractive profile



MIPV is the Mobile Integrated PV division of BiPVco, a British manufacturer specialising in CIGS thin film solar integrated solutions. Across the Building, Mobile and Off Grid/Temporary Power sectors.

Solar carports can be used to supplement EV charging by use of renewable green solar energy available within the parking space. Fit for residential or commercial applications, in a range of elegant designed options. Solar Carports & Canopies use BiPVco's Flextron technology.

FLEXTRON is the universal 'peel and stick' module with integrated solar cells. BiPVco uses CIGS technology (Copper Indium Gallium Selenide), thin-film solar cells to convert sunlight to energy. Flextron modules are built using BiPVco's unique in-house developed process.

Key Features

- Cell Efficiency, up to 17%
- Best in class thin film technology
- Low installed weight of less than 3kg/m²
- Multiple Bypass Diode design to improve performance in shading/low light
- 5 year product warranty & 25 year performance warranty

Technical Specifications

